

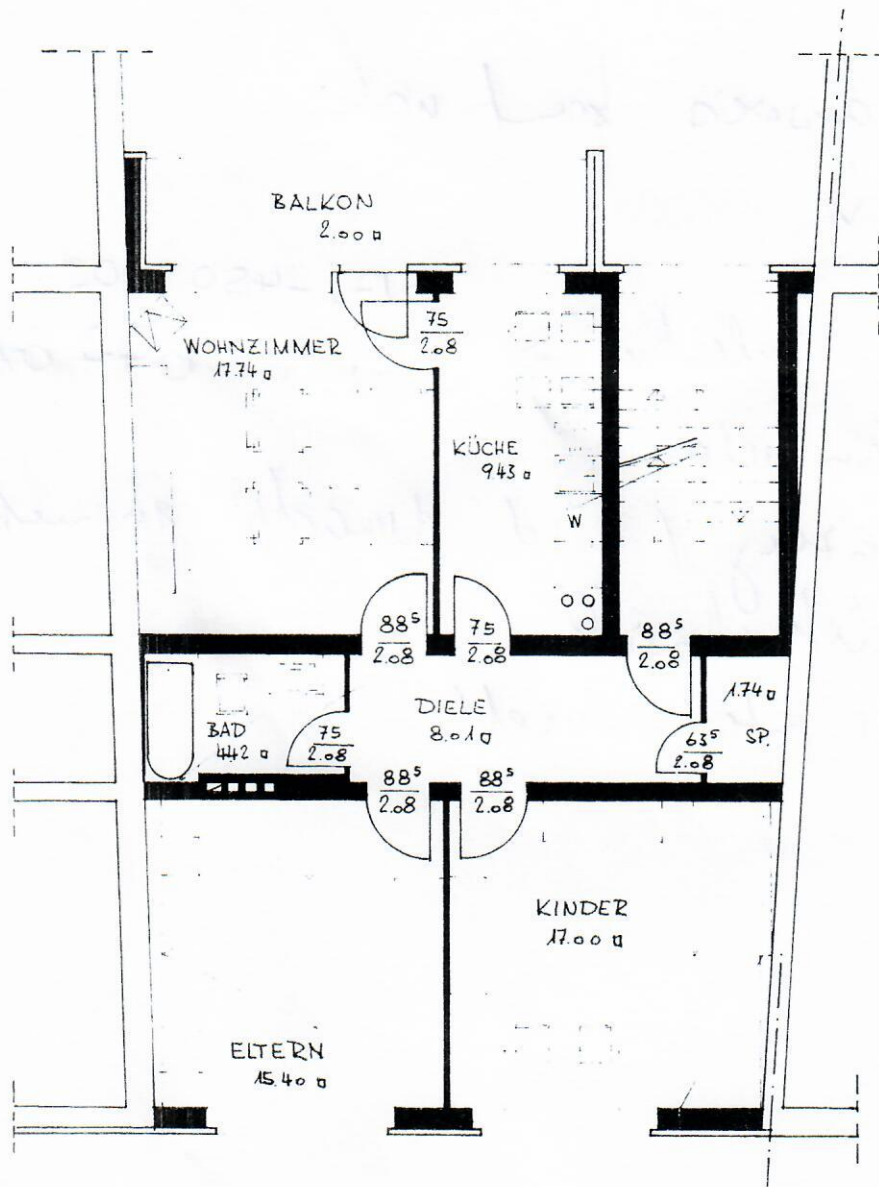
9.02

40 10 3.90 10 2.10 24 24 2.10 24

24 29 2.25 88^s 75 1.25 29 29 2.00 52^s

1.38 2.28 1.28

24 5.71^s 24 2.82^s



11.40

3.65 1.40

4.49

24

170

24

4.00

3.65

3.65

4.49

24

170

11.40

24

4.00

3.65

4.0 3.65

3.99

24

3.50

77^s 2.25 1.22 2.25 1.45^s

1.38 1.38

2.60 10 4.71 5 96^s 12^s

3.80 10 4.05 35

7.95